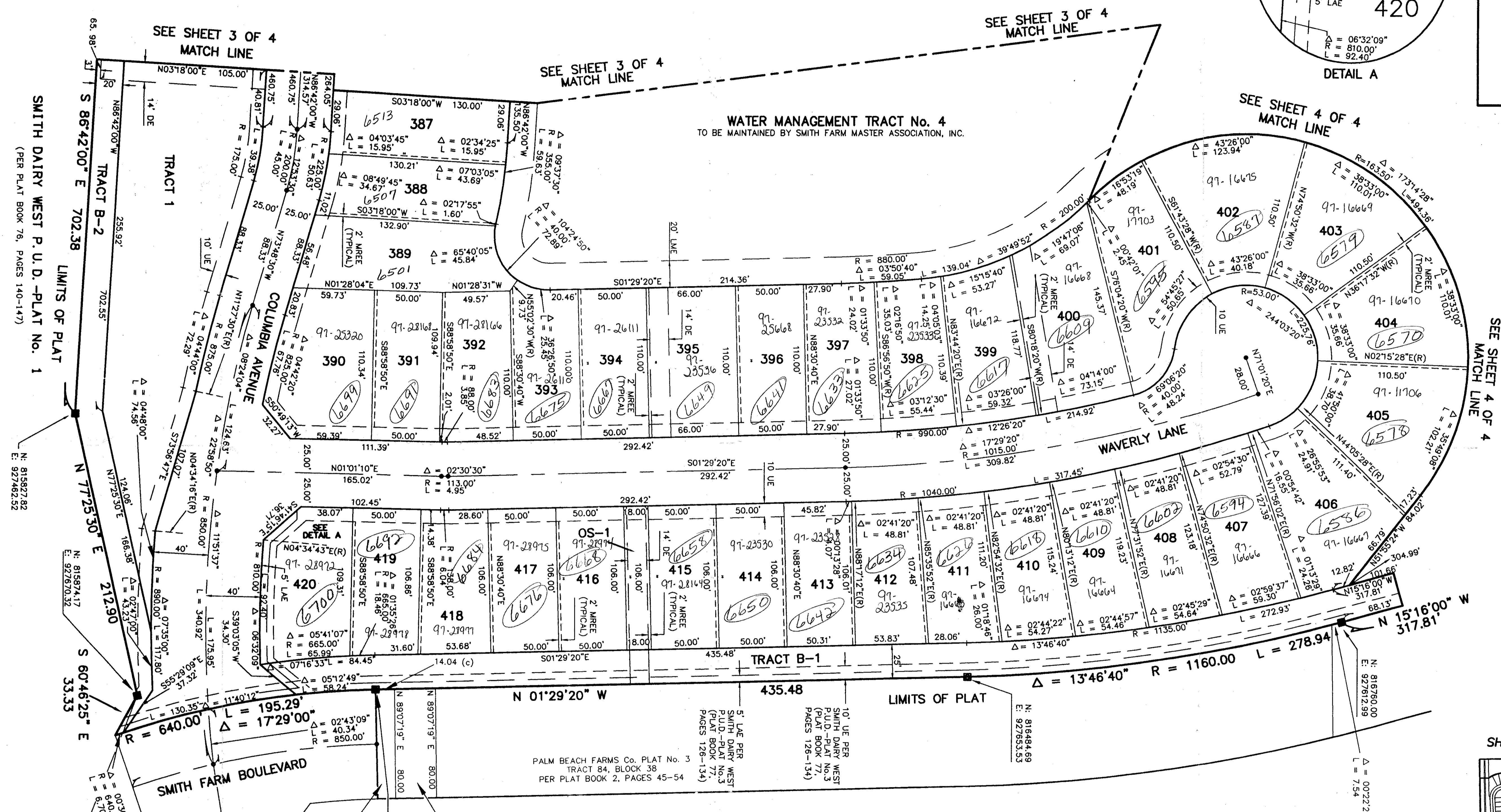
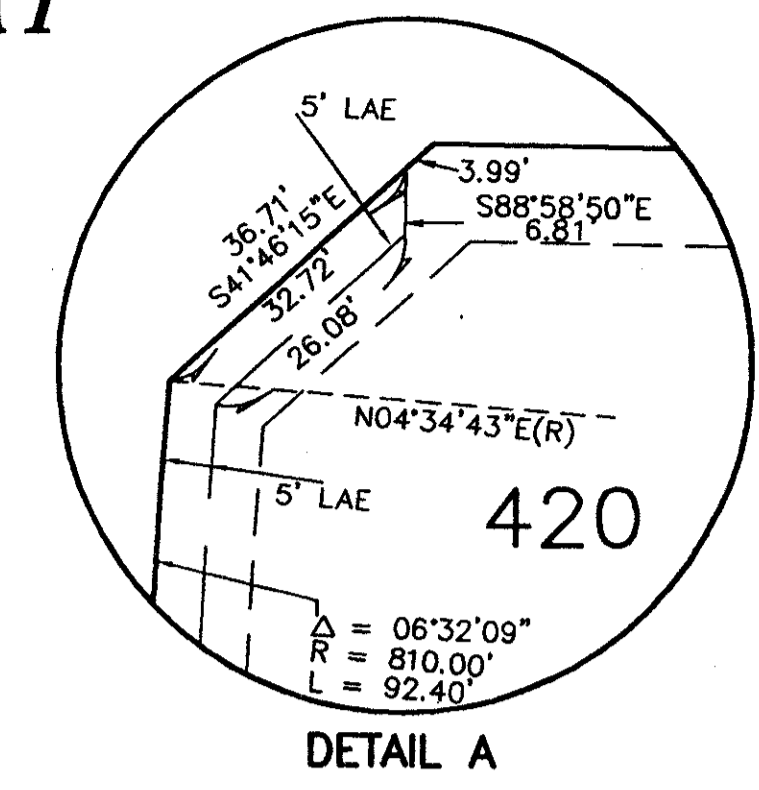


SMITH DAIRY WEST P.U.D.-PLAT No. 3 TRACT "A" REPLAT
 BEING A REPLAT OF TRACT "A" OF SMITH DAIRY WEST P.U.D. - PLAT No.3
 AS RECORDED IN PLAT BOOK 77, PAGES 126 THROUGH 134 OF
 THE PUBLIC RECORDS OF PALM BEACH COUNTY, FLORIDA
 IN PART OF SECTIONS 4 AND 5, TOWNSHIP 45 SOUTH, RANGE 42 EAST,
 PALM BEACH COUNTY, FLORIDA
 SHEET 3 OF 5
 JULY 1996

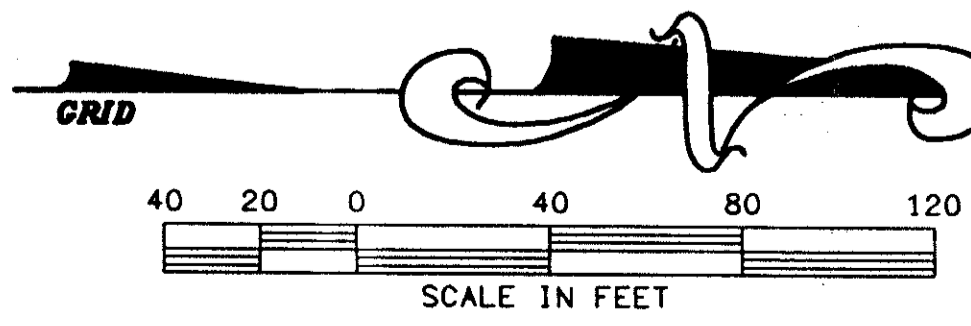
0653-005

106



SUBDIVISION SMITH DAIRY WEST
 BOOK 106
 FLOOD MAP # 170A
 ZONING FOD
 QUAD # 49
 SE 04-77
 PUD NAME SMITH DAIRY WEST PLAT 3

PALM BEACH COUNTY
 SURVEY DEPARTMENT
 BRASS DISK IN CONCRETE
 "PBF 48"
 N: 814649.44
 E: 930777.88



SMITH DAIRY WEST P.U.D.-PLAT No. 3
 (PER PLAT BOOK 77, PAGES 126-134)

- LEGEND:**
- = PERMANENT REFERENCE MONUMENT "P. L. S. 4828"
 - = PERMANENT CONTROL POINT "P.C.P. 4828"
 - R = RADIUS
 - L = ARC LENGTH
 - Δ = DELTA (CENTRAL ANGLE)
 - PC = POINT OF CURVATURE
 - PT = POINT OF TANGENCY
 - PSM = PROFESSIONAL SURVEYOR & MAPPER
 - PLS = PROFESSIONAL LAND SURVEYOR
 - UE = UTILITY EASEMENT
 - DE = DRAINAGE EASEMENT
 - LME = LAKE MAINTENANCE EASEMENT
 - N = NORTHING (GRID)
 - E = EASTING (GRID)
 - (C) = CALCULATED
 - (R) = RADIAL
 - MREE = MAINTENANCE AND ROOF EAVE EASEMENT
 - LAE = LIMITED ACCESS EASEMENT

SCALE: 1"=40'	NICK MILLER, INC. Surveying Planning & Development Consultants	DRAWN BY:
DATE: JULY 1996		CHK:
SMITH DAIRY WEST P.U.D. - PLAT No. 3 TRACT "A" REPLAT		DRAWING NUMBER
2560 RCA Blvd., Suite 105 Palm Beach Gardens, Florida 33410 (561) 627-5200 D.B.P.R. Business License No. 4318		94014AW

